

© International Baccalaureate Organization 2024

All rights reserved. No part of this product may be reproduced in any form or by any electronic or mechanical means, including information storage and retrieval systems, without the prior written permission from the IB. Additionally, the license tied with this product prohibits use of any selected files or extracts from this product. Use by third parties, including but not limited to publishers, private teachers, tutoring or study services, preparatory schools, vendors operating curriculum mapping services or teacher resource digital platforms and app developers, whether fee-covered or not, is prohibited and is a criminal offense.

More information on how to request written permission in the form of a license can be obtained from <https://ibo.org/become-an-ib-school/ib-publishing/licensing/applying-for-a-license/>.

© Organisation du Baccalauréat International 2024

Tous droits réservés. Aucune partie de ce produit ne peut être reproduite sous quelque forme ni par quelque moyen que ce soit, électronique ou mécanique, y compris des systèmes de stockage et de récupération d'informations, sans l'autorisation écrite préalable de l'IB. De plus, la licence associée à ce produit interdit toute utilisation de tout fichier ou extrait sélectionné dans ce produit. L'utilisation par des tiers, y compris, sans toutefois s'y limiter, des éditeurs, des professeurs particuliers, des services de tutorat ou d'aide aux études, des établissements de préparation à l'enseignement supérieur, des fournisseurs de services de planification des programmes d'études, des gestionnaires de plateformes pédagogiques en ligne, et des développeurs d'applications, moyennant paiement ou non, est interdite et constitue une infraction pénale.

Pour plus d'informations sur la procédure à suivre pour obtenir une autorisation écrite sous la forme d'une licence, rendez-vous à l'adresse <https://ibo.org/become-an-ib-school/ib-publishing/licensing/applying-for-a-license/>.

© Organización del Bachillerato Internacional, 2024

Todos los derechos reservados. No se podrá reproducir ninguna parte de este producto de ninguna forma ni por ningún medio electrónico o mecánico, incluidos los sistemas de almacenamiento y recuperación de información, sin la previa autorización por escrito del IB. Además, la licencia vinculada a este producto prohíbe el uso de todo archivo o fragmento seleccionado de este producto. El uso por parte de terceros —lo que incluye, a título enunciativo, editoriales, profesores particulares, servicios de apoyo académico o ayuda para el estudio, colegios preparatorios, desarrolladores de aplicaciones y entidades que presten servicios de planificación curricular u ofrezcan recursos para docentes mediante plataformas digitales—, ya sea incluido en tasas o no, está prohibido y constituye un delito.

En este enlace encontrará más información sobre cómo solicitar una autorización por escrito en forma de licencia: <https://ibo.org/become-an-ib-school/ib-publishing/licensing/applying-for-a-license/>.

Mathematics: analysis and approaches

Standard level

Paper 1

24 October 2024

Zone A afternoon | Zone B afternoon | Zone C afternoon

Candidate session number

1 hour 30 minutes

--	--	--	--	--	--	--	--	--	--

Instructions to candidates

- Write your session number in the boxes above.
- Do not open this examination paper until instructed to do so.
- You are not permitted access to any calculator for this paper.
- Section A: answer all questions. Answers must be written within the answer boxes provided.
- Section B: answer all questions in the answer booklet provided. Fill in your session number on the front of the answer booklet, and attach it to this examination paper and your cover sheet using the tag provided.
- Unless otherwise stated in the question, all numerical answers should be given exactly or correct to three significant figures.
- A clean copy of the **mathematics: analysis and approaches SL formula booklet** is required for this paper.
- The maximum mark for this examination paper is **[80 marks]**.



Full marks are not necessarily awarded for a correct answer with no working. Answers must be supported by working and/or explanations. Where an answer is incorrect, some marks may be given for a correct method, provided this is shown by written working. You are therefore advised to show all working.

Section A

Answer **all** questions. Answers must be written within the answer boxes provided. Working may be continued below the lines, if necessary.

1. [Maximum mark: 6]

Consider the following set of ordered data.

27	27	31	32	33	37	41	46	54	57
----	----	----	----	----	----	----	----	----	----

- (a) Write down
 - (i) the mode;
 - (ii) the range;
 - (iii) the median. [3]
- (b) Find the interquartile range. [3]

.....

.....

.....

.....

.....

.....

.....

.....

.....

.....

.....

.....

.....

.....

.....

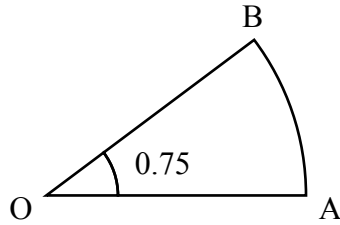


2. [Maximum mark: 5]

Points A and B lie on a circle with centre O and radius r cm, where $\hat{AOB} = 0.75$ radians.

This is shown on the following diagram.

diagram not to scale



The area of sector OAB is 6 cm^2 .

(a) Find the value of r . [3]

(b) Hence, find the perimeter of sector OAB. [2]

.....

.....

.....

.....

.....

.....

.....

.....

.....

.....

.....

.....

.....

.....

.....

.....

.....

.....

.....

.....

.....

.....

.....



3. [Maximum mark: 6]

Two events A and B are such that $P(A) = 0.45$, $P(B) = 0.65$ and $P(A \cup B) = 0.8$.

(a) Find $P(A \cap B)$.

[3]

(b) Find $P(A'|B')$.

[3]

.....
.....
.....
.....
.....
.....
.....
.....
.....
.....
.....



4. [Maximum mark: 4]

Prove that $(2n + 5)^2 - (2n - 5)^2$ is a multiple of 10 for all $n \in \mathbb{Z}^+$.

.....

.....

.....

.....

.....

.....

.....

.....

.....

.....

.....

.....

.....

.....

.....

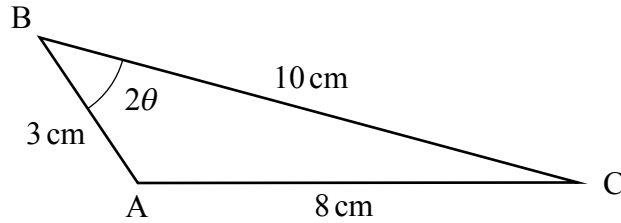
.....



5. [Maximum mark: 6]

The following diagram shows triangle ABC , where $AB = 3 \text{ cm}$, $BC = 10 \text{ cm}$, $AC = 8 \text{ cm}$ and $\hat{ABC} = 2\theta$.

diagram not to scale



Find the exact value of $\cos \theta$, giving your answer in the form $\frac{\sqrt{p}}{q}$, where $p, q \in \mathbb{Z}^+$.

.....

.....

.....

.....

.....

.....

.....

.....

.....

.....

.....

.....

.....



6. [Maximum mark: 6]

For a particular arithmetic sequence, $u_{10} = 14$ and $S_{25} = 200$.

Find the value of k such that $u_k = 0$.

.....

.....

.....

.....

.....

.....

.....

.....

.....

.....

.....

.....

.....

.....

.....



Do **not** write solutions on this page.

Section B

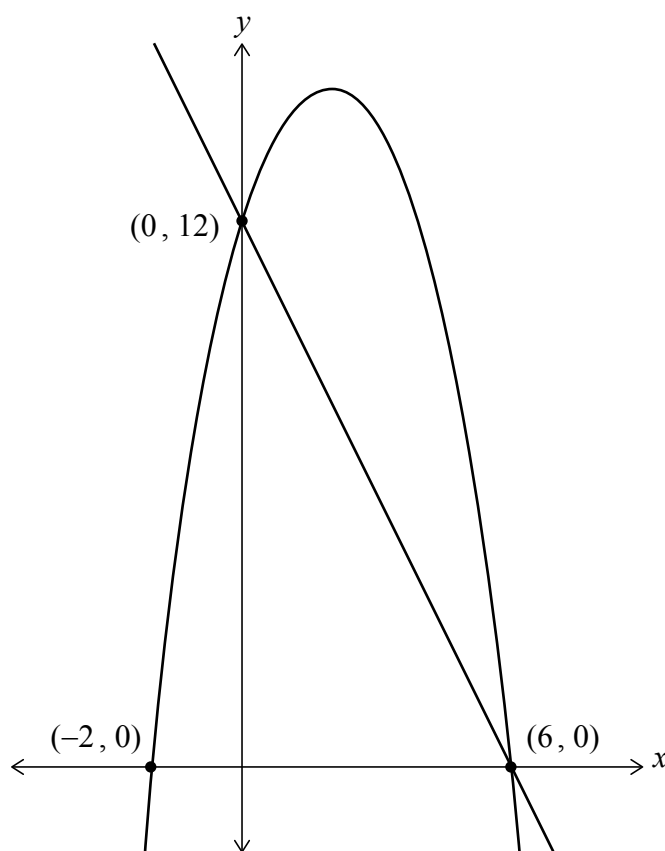
Answer **all** questions in the answer booklet provided. Please start each question on a new page.

7. [Maximum mark: 16]

The following diagram shows parts of the graphs of two functions f and g .

The graph of f is linear, has an x -intercept at $(6, 0)$ and a y -intercept at $(0, 12)$.

The graph of g has x -intercepts at $(-2, 0)$ and $(6, 0)$ and a y -intercept at $(0, 12)$.



(a) Write down the equation for f in the form $f(x) = mx + c$.

[2]

(This question continues on the following page)



Do **not** write solutions on this page.

(Question 7 continued)

The function g is given by $g(x) = -x^2 + bx + 12$, where b is a real constant.

(b) Find the value of b . [3]

(c) Show that the area of the region enclosed by the graph of f and the graph of g can be represented by the definite integral $\int_0^6 (-x^2 + 6x)dx$. [2]

(d) Hence, find the area of the region enclosed by the graph of f and the graph of g . [4]

Point P is on the graph of g . The tangent to the graph of g at P is parallel to the graph of f .

(e) Find the coordinates of P . [5]



Do **not** write solutions on this page.

8. [Maximum mark: 14]

The function f is defined as $f(x) = \log_2(8x)$, where $x > 0$.

(a) Find the value of

(i) $f(2)$;

(ii) $f\left(\frac{1}{8}\right)$.

[3]

(b) Find an expression for $f^{-1}(x)$.

[4]

(c) Hence, or otherwise, find $f^{-1}(0)$.

[1]

The graph of $y = f(4x^2)$ can be obtained by translating and stretching the graph of $y = \log_2 x$.

(d) Describe these two transformations specifying the order in which they are to be applied. [6]



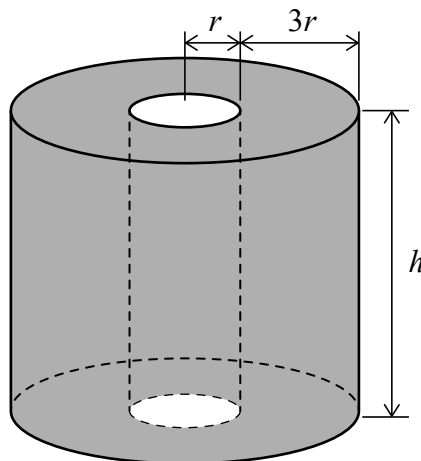
Do **not** write solutions on this page.

9. [Maximum mark: 17]

Consider a cylinder of radius $4r$ and height h . A smaller cylinder of radius r is removed from the centre to form a hollow cylinder. This is shown in the following diagram.

All lengths are measured in centimetres.

diagram not to scale



The total surface area of the hollow cylinder, in cm^2 , is given by S .

The volume of the hollow cylinder, in cm^3 , is given by V .

(a) Show that $S = 30\pi r^2 + 10\pi r h$. [3]

(b) The total surface area of the hollow cylinder is $240\pi \text{ cm}^2$.

Show that $V = 360\pi r - 45\pi r^3$. [6]

(c) Find an expression for $\frac{dV}{dr}$. [2]

The hollow cylinder has its maximum volume when $r = p\sqrt{\frac{2}{3}}$, where $p \in \mathbb{Z}^+$.

(d) Find the value of p . [3]

(e) Hence, find this maximum volume, giving your answer in the form $q\pi\sqrt{\frac{2}{3}}$, where $q \in \mathbb{Z}^+$. [3]



Please **do not** write on this page.

Answers written on this page
will not be marked.



12EP12